

ACCESSIBLE PARKING SPACE SIGN

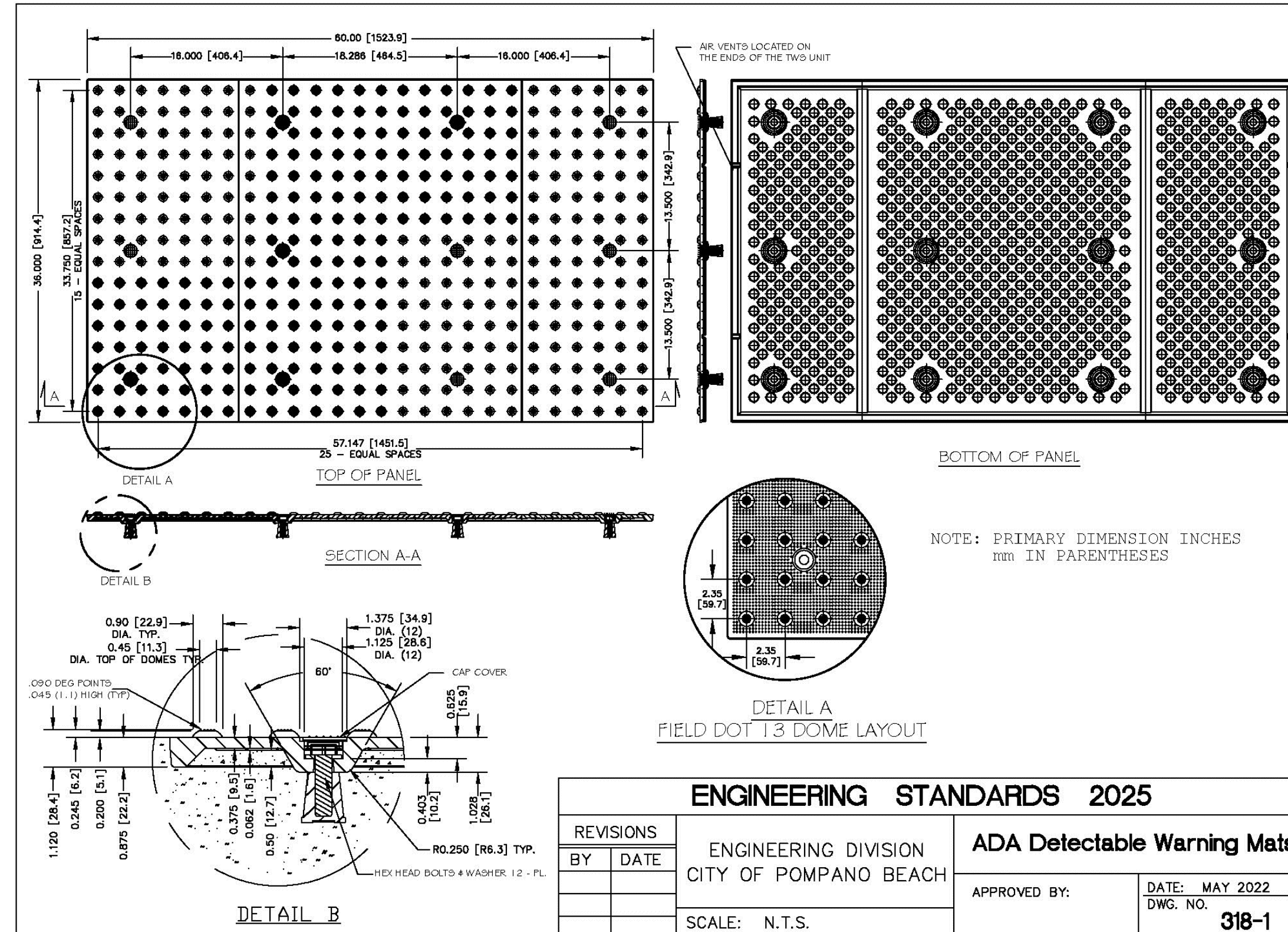
N.T.S.

SIGN NOTE

ACCESSIBLE PARKING SPACES SHALL BE POSTED WITH A FIXED PARKING SIGN NO LESS THAN 60" Min. TO THE BOTTOM OF THE SIGN AND WHICH BEARS THE INTERNATIONAL SYMBOL OF ACCESSIBILITY MEETING THE REQUIREMENTS OF THE STANDARDS AND THE CAPTION "PARKING BY DISABLED PERMIT ONLY." AND MUST INDICATE THE PENALTY FOR ILLEGAL USE OF THE SPACE.

ENGINEERING STANDARDS 2025

REVISIONS		ENGINEERING DIVISION CITY OF POMPAÑO BEACH	ACCESSIBLE SPACE SIGN	
BY	DATE			DATE: MAY 2022
				DWG. NO.
		SCALE: N.T.S.	300-5	



ENGINEERING STANDARDS 2025				
REVISIONS		ENGINEERING DIVISION CITY OF POMPANO BEACH SCALE: N.T.S.	ADA Detectable Warning Mats	
BY	DATE		APPROVED BY:	DATE: MAY 2022 DWG. NO. 318-1



**301 East Atlantic Blvd.
Pompano Beach, FL 33060
PH: (954) 788-3400**

Florida Engineering Business License: CA7928
Florida Surveyor and Mapper Business License: LB6860
Florida Landscape Architecture Business License: LC26000457

REVISIONS

[illegible]

PRELIMINARY PLAN
NOT FOR CONSTRUCTION

**THESE PLANS ARE NOT FULLY PERMITTED
AND ARE SUBJECT TO REVISIONS MADE
DURING THE PERMITTING PROCESS.**

RESPONSIBILITY FOR THE USE OF THESE PLANS PRIOR TO OBTAINING PERMITS FROM ALL AGENCIES HAVING JURISDICTION OVER THE PROJECT WILL FALL SOLELY UPON THE USER.

ISSUE DATE:	11/12/2025
-------------	------------

DESIGNED BY: NW

DRAWN BY: FA

BID-CONTRACT:

NILES T. WARRICK, P.E.
FLORIDA REG. NO. 94320
(FOR THE FIRM)

CLIENT

JADIAN IOS

PROJECT

**951 SW 12th AVENUE
POMPANO BEACH FL**

SHEET TITLE

PAVEMENT MARKING AND SIGNAGE DETAILS

SHEET
NUMBER **CM-502**

PROJECT NUMBER	15427.00
----------------	----------